

後植民計畫

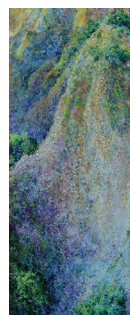
Post-Ecolonialism Project

還地於樹，還水於溪
連結與行動

2016

Land to Trees, Water to Streams
Join in and take action!

06.05
—07.24



策展人 陳泓易
Curator Chen Hungyi

藝術家 洪天宇
Artists Hung Tien Yu

陳泓易 尹子潔
Chen Hungyi Yin Zi Jie

開幕
Opening 06.05 Sun 15:00

講座
Lecture 06.12 Sun 15:00

種樹作為一種藝術行動
Planting Trees as an Art Action

講者 陳泓易
Speaker Chen Hungyi 「後植民計畫」策展人
台南藝術大學藝術創作理論研究所助理教授

我們習慣站在以人為主的角度思考自然。
這一次，我們嘗試站在植物的角度去思考自然。
或許這可以是另一種開始。

本計劃策展人陳泓易從 2003 年開始研究與實踐在臺灣生態熱點的社區種樹，自 2010 年以來有許多藝術家與學生加入，至今植樹超過 80,000 棵台灣原生種樹木，範圍包括屏東霧台、高雄甲仙、雲林古坑、成龍溼地、嘉義布袋、東石、新美和台南七股等，許多是莫拉克風災受創區域。為了聚集更多人力與資源，他將種樹計劃發展為藝術行動，期待以藝術作為方法，讓更多人知覺到自己的可能，參與連結，具體行動。這個種樹的藝術行動即為《後殖民計畫》的前身。

這展覽同時是一個空間展覽，也是一個藝術行動。展覽呈現了洪天宇的畫作和由陳泓易和尹子潔共同製作的雲龍瀑布影像。兩者呈現出台灣的山水樣貌，而種樹則是最實際地將土地還給自然的行動。本展邀請來參觀的民眾將台灣原生種的檫木樹苗領取回去，種植之後將拍攝的影像上傳到駒空間的臉書頁面上，並標示出種植地點，再由策展團隊統整為一完整的植樹地圖。這是一個漸進持續的作品發展，同時也是回到生活中的具體實踐行動。微小，但堅定的開始。

*Most of us are used to contemplate nature as a human being.
This time, we attempt to contemplate nature as a plant—in the hopes of being inspired anew.*

Curator Chen Hungyi has been studying and planting trees at various ecological hotspot communities in Taiwan. Since 2010, many artists and students have joined him, planting over 80,000 Taiwan-origin trees in areas such as Wutai in Pingtung, Jiaxian in Kaohsiung, Gukeng and Chenglong Wetlands in Yunlin, Budai, Dongshi and Xinmei in Chiayi, and Chigu in Tainan; many of which were devastated by Typhoon Morakot. In order to gather more resources and manpower, Chen extended the tree-planting project into an artistic movement, intending to use art as a method for people to discover possibilities, take part and make a difference—which later came to be known as "The Post-Ecologicalism Project".

This project is at the same time a stationary exhibition and an artistic movement. The exhibition features the artworks of Hung Tienyu and the visuals of Yunlung Waterfall co-produced by Chen Hungyi and Yin Zi Jie, conveying simultaneously both the natural scenery of Taiwan and the message that planting trees is the most practical act to give the land back to nature. Visitors will be given a beech sprig to take home and are encouraged to take a photo or video of their planted sprigs and upload to the Facebook page of Howl's Space with the locations, which the curating team will then put together into a tree-planting map, a work-in-progress and a movement to take action in real life—a small but sure beginning.



駒空間
Howl Space

FB: howlspace

No. 163, Sec.2, Yongfu Rd.,
West Central Dist., Tainan

700台南市中西區永福路二段163號

Wed-Sun 13:00-18:00

主辦單位 駒空間
協辦單位 高雄市甲仙愛鄉協會 嘉義縣鄉村永續發展協會
贊助 國家文化藝術基金會 財團法人春之文化基金會

Organizers Howl Space
Co-organizes Jiaxian People's Association
Chiayi County Everlasting Development Association
Sponsored by National Culture and Arts Foundation, NCAF
Spring Foundation



春之文化基金會
SPRING FOUNDATION

「後殖民計畫」巡迴開花系列

2016. 7.17 — 2016. 9.03

法國諾曼地「穆提葉花園」、「夏穆克花園」

Bois des Moutiers & Collection Shamrock

2016. 12.17 — 2017. 2.05

台北當代藝術館

Museum of Contemporary Art, Taipei

2016. 12m — 2017. 2m

高雄甲仙、嘉義東石社區

Jiaxian in Kaohsiung and Dongshi in Chiayi

Post-Ecologicalism Project exhibitions